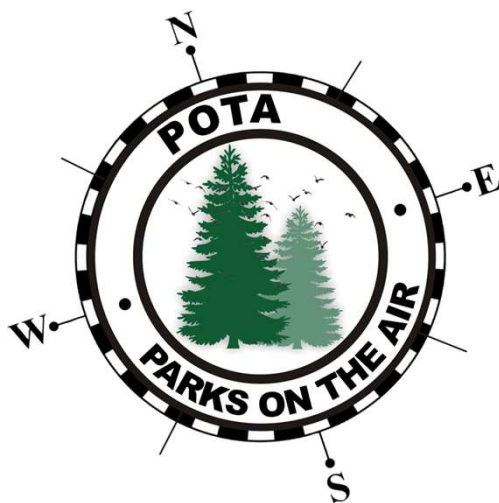


Parks on the Air (POTA)



Presented by Jocelyn KD8VRX/VA2VRX & Walt W8LTR

Why I like POTA

- Outdoors.
 - Who doesn't love being outdoors 😊
- Challenging.
 - Every POTA presents a different challenge.
 - Try different antennas and configurations.
- Pile up.
 - Lots of contacts quickly.

Short History

- NPOTA 2016 created/administered by Sean (KX9X) and Norm (W3IZ).
 - Celebrate the 100 years of the National Park Service.
 - January 1st – December 31st, 2016



- POTA Started in early 2017, to keep the momentum going.

How do you participate?

- Hunter or Activator?
 - Hunter = You are making contact with someone in a park.
 - Activator = You are making contacts from a valid park entity.
- What's the exchange?
 - Hunter: Callsign, RST, State
 - Activator: Callsign, RST, Park Designator
- How do I get credit?
 - Hunter: Nothing 😊 The activator log is all that counts to get you credit.
 - Activator: Send your log to POTA.

Tips and Tricks for a successful activation

Planning ahead.

- POTA Signup.
- Look at the POTA Map for parks near by.
- Pick a day/date you want to activate.
 - Check contest calendars.
- Look at Google Maps for a preview of your environment.
- Will you have access to an outlet(power)?
- Do you need to bring a table, chair, canopy?
- How will you log? Paper, N3FJP, N1MM, HAMRS, etc...

POTA Website Signup

- www.pota.app
 - Click on “Sign up” and follow the directions.



Sign In with your social account



We won't post to any of your accounts without asking first

Sign in with your email and password

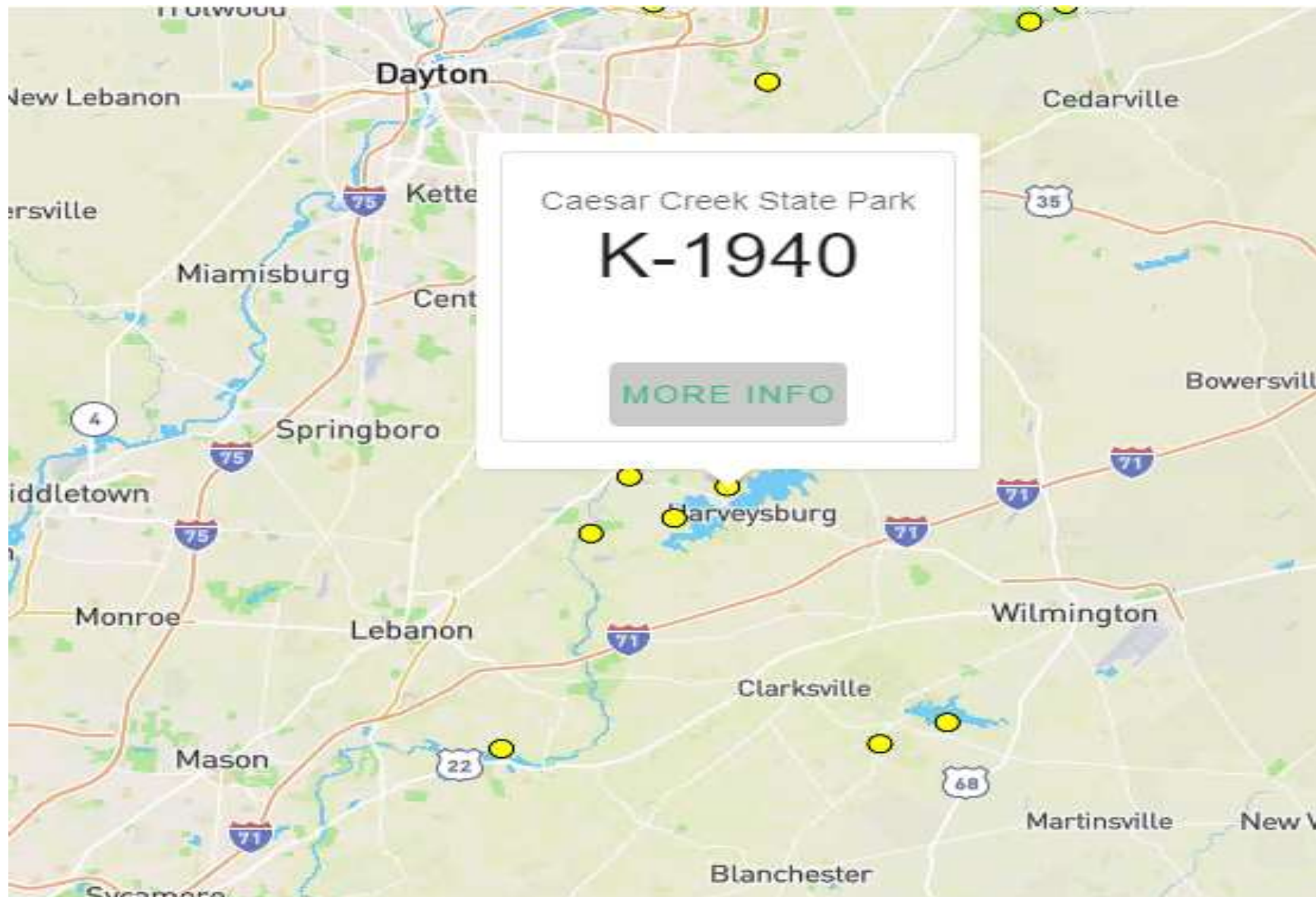
Email

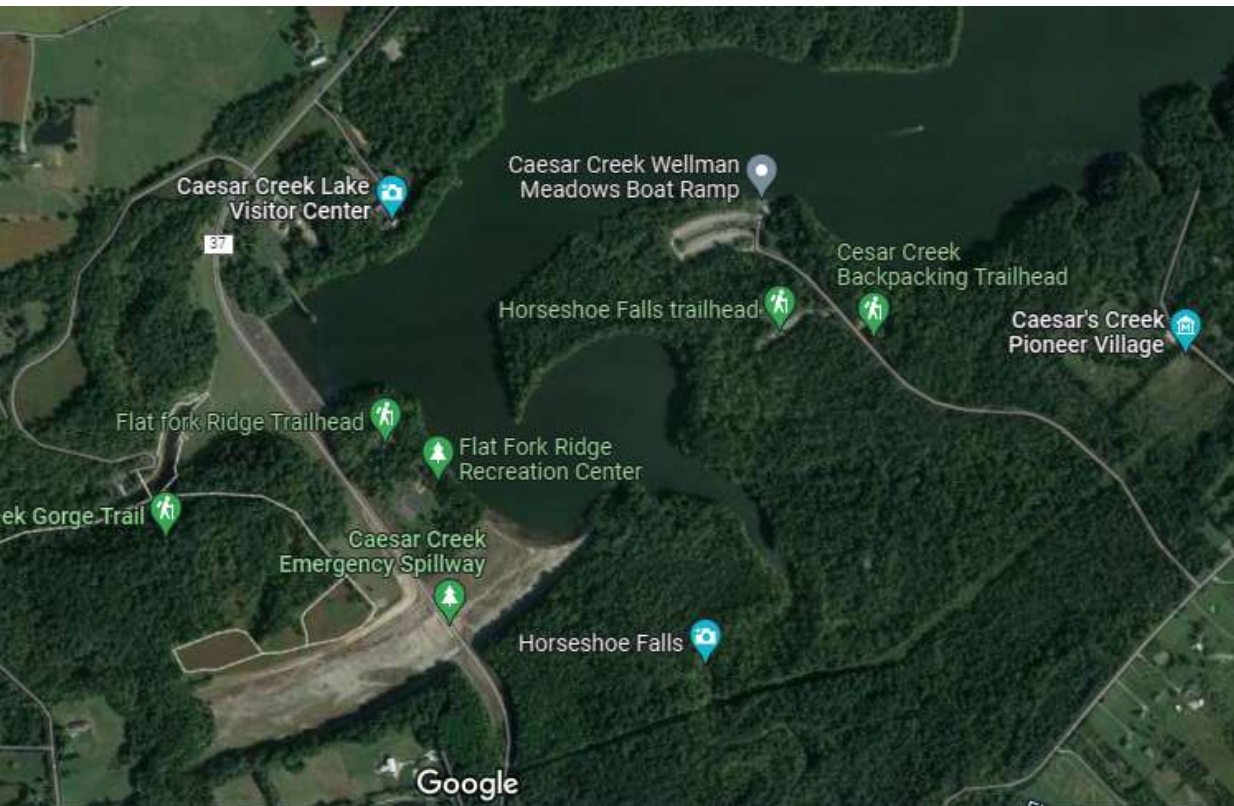
Password

Forgot your password?

Sign in

Need an account? [Sign up](#)





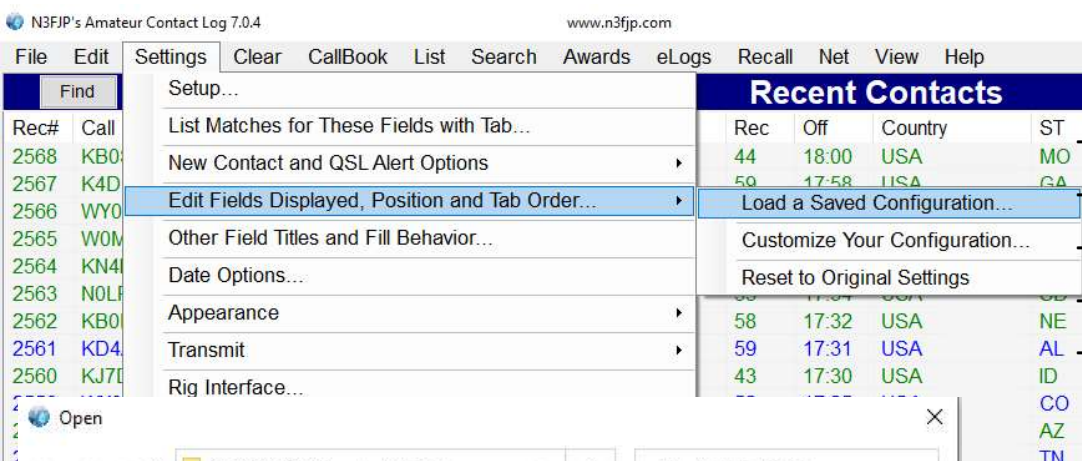
- **Google is your friend.**
- **Satellite map**
- **Street View feature**

- Big Parking Lot
- Lots of trees
- No power, bring battery
- Bring table and chair



Setting up N3FJP for POTA

- Due to increase demand for POTA, the latest version of N3FJP Amateur Contact Log(7.0.4) includes a POTA Template.
 - Use the “generic” N3FJP, there’s NO special software for POTA.
 - Create a NEW database for each park.
 - Example “POTA_K-1940_20220407.mdb”.
 - Load the POTA template.
 - Enable the “AC Log Calldata (Free)” in N3FJP.
 - This will auto populate a lot of the fields for you. This can be used OFFLINE.
 - Setup Rig Control.
 - This will keep track of band/frequency/mode.



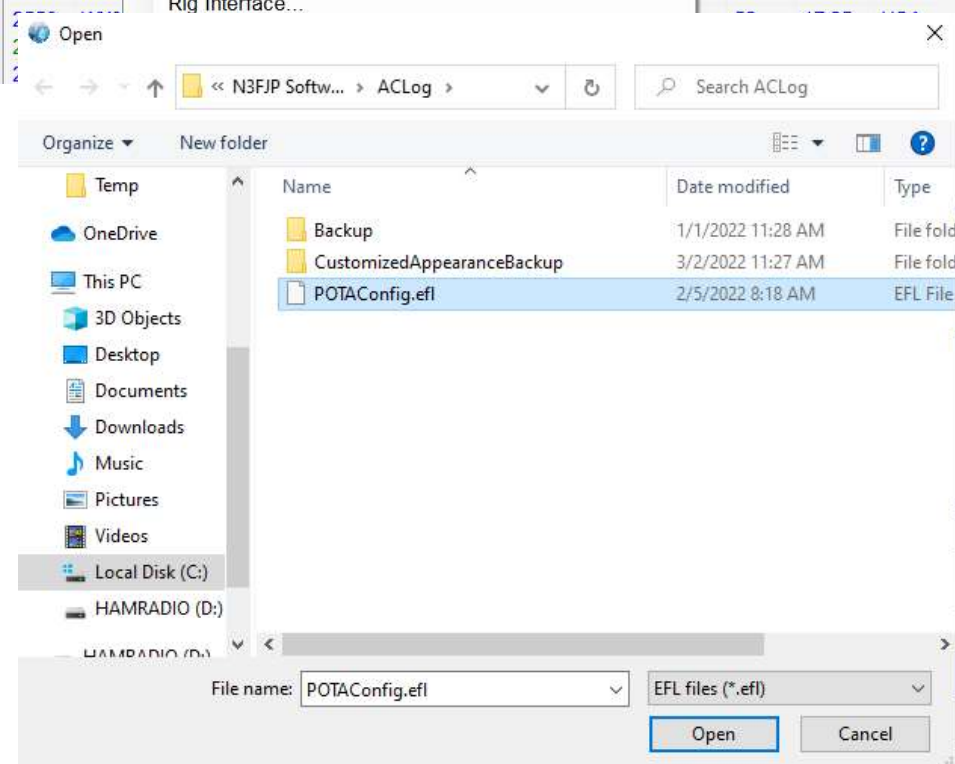
Open N3FJP

Click on “Settings”

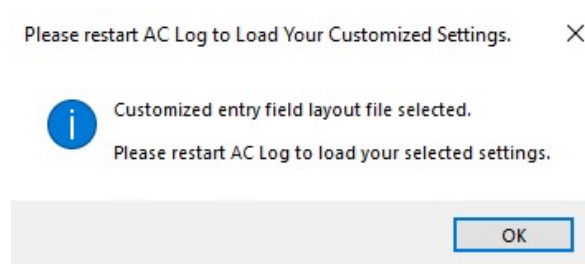
Select “Edit Fields Displayed, Position and Tab Order”

Choose “Load a Saved Configuration”

Select “POTA



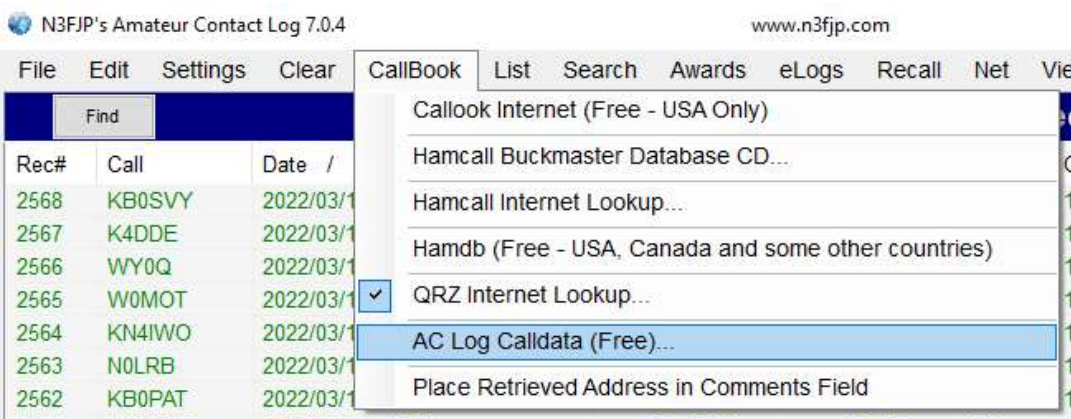
- **Select “POTAConfig.elf”**
- **Click on the “Open” button**
- **Click “Ok” and restart N3FJP**



POTA K-1940_20220407.mdb

19:14:36 UTC

Spot Last



Click on “Download Data”
Select “Enable Call Data Lookup”
Click “Done”

Select “AC Log Calldata (Free)” from the “Callbook” menu

AC Log Call Data

The AC Log call data lookup function only includes US and Canadian calls. It does not include the latitude and longitude for specific stations, so bearing and distance will not precisely update. For more complete data sources, please try QRZ and HamCall.

To use this AC Log call data feature, first click the button to download the 41 data files (which we update approximately every six months). This download is approximately 80 meg, so be prepared for an extended download!

You can check here to determine the date the files were last updated:

<http://www.n3fjp.com/calldata.html>

Download Data

☒ Enable Call Data Lookup

Done

Call New!	Sent	Rec	Other	Log Contact	Name	State New!	
KB8ZYE	59	59			Michael	OH	USA
Date	Time On	Band	Frequency	Mode	Power	Other New!	
2022/03/29	19:09	20	14.235	SSB	7	K-1940	

Call New!	Sent	Rec	Other	Log Contact	Name	State Need	
KJ8MRH	59	59			Mark	OH	USA
Date	Time On	Band	Frequency	Mode	Power	Other Need	
2022/03/29	19:10	20	14.235	SSB	7	K-1940	

Call New!	Sent	Rec	Other	Log Contact	Name	State Need	
W8LTR	59	59			Walter	OH	USA
Date	Time On	Band	Frequency	Mode	Power	Other Need	
2022/03/29	19:12	20	14.235	SSB	7	K-1940	

The gear

When you get there, take your time

- Find a good location for your antenna.
 - Be considerate of other folks trying to enjoy the park.
 - Follow the park rules, some don't let you put up antennas in the trees, some don't let you put stakes in the ground.
- Setup your station.
- Find your Grid Square and County.
 - POTA Maps
 - Ham Square on iOS, other apps.
 - Google County Maps.
- Update N3FJP with your Grid Square

Ready, Set & Go

- Login to the www.pota.app website.
 - This will show up the current parks on the air.
- Start by doing Park-to-Park (P2P).
 - This will test your setup/software.
 - Solve any issues before the pileup.
- When you're ready spot yourself and get ready for the pile up.
 - Try to use the POTA spotting site, it's the best for this activity.
 - If you can spot yourself, ask someone to spot you.
- Enjoy that pile up!

Wrap up

- Once you are done, spot yourself with “QRT” in the comments.
 - This tells folks you are done, also the website will no longer show you if the filter is applied.
- Break down your station.
 - Take the time to put away neatly, you’ll appreciate it next time.
- Put everything the way you found it or better.

When you get back home

- Fix any mistake that you realized on your way home.
 - Grid Square, Date/Time, Frequency/Bands, etc...
- Export ADIF for your activation.
 - Optional, use ADIF Master to make bulk changes.
- Send your log to POTA.
 - Email k8@parksontheair.com
 - Filename convention [callsign@parknumber-date.adif](#)
 - Ex: KD8VRX@K-1940-20220407.adif
- Import your POTA log into your regular log.

Upload to Logbook of the World (LotW)

- This step is optional but recommend for grid chasers.
- Setup LotW with a new Station Location.
- Upload to LotW with the park Station Location.

TQSL

File Station Location Callsign Certificate Help

Log Operations Station Locations Callsign Certificates

Station Locations

KD8VRX

Home QTH

Create a new Station Location

Add Station Location

Call Sign KD8VRX

DXCC Entity UNITED STATES OF AMERICA

Grid Square EM79wm

ITU Zone 8

CQ Zone 4

IOTA ID

☐ Allow 'None' for Call Sign

Help

< Back Next >

This is where you'll need:

- Grid Square
- ITU Zone
- CQ Zone
- County

Add Station Location

State Ohio

County Warren

Park [None]

☐ Allow 'None' for State

Help

< Back Next > Cancel

In N3FJP when uploading to LotW make sure to select the proper Station Location when sending your log.

LoTW Manager 1.9

<p>LoTW User Name: KD8VRX</p> <p>LoTW Login Password: ***** <input type="checkbox"/> Display Password</p> <p>LoTW Station Location: POTA Caesars Creek State Park</p> <p>Edit Add</p> <p>TQSL Software path: C:\Program Files (x86)\TrustedQSL\ Browse</p> <p>Copy to Clipboard</p>	<p>Sign and Upload</p> <p>All Contacts Not Uploaded</p> <p>Selected Contacts from Main Form</p> <p>Entire Log</p> <p><input type="checkbox"/> Add Station_Call KD8VRX <input type="checkbox"/> Show Date Range</p> <p>From Registry</p> <p><input type="checkbox"/> Enable Real Time Upload</p>
---	--

More Information

- Hunter/Activator Guides
 - Parksontheair.com
 - Help/Getting Started
 - Activator Guide
 - Video Activator Guide (10 mins)
 - Hunter Guide
- Youtube Videos
 - Jason (KM4ACK)
 - Mike (K8MRD)
- ARRL Portable Operating
 - Stuart Thomas (KB1HQS)
- Consider making a donation.
 - There's a cost to maintain the website.
 - You can also help out by purchasing merchandise.

Stories and Anecdotes

Enough theory, let's practice

Where: Ceasar's Creek State Park (Flat Fork Ridge)
3466 N Clarksville Rd, Waynesville, OH 45068

Date: April 23rd, 2022

Rain date: April 24th, 2022

Time: 10:00am – 1:00pm

What to bring: Chair, Food and Beverage

We will be using the clubs Go-Box, we want everyone to get familiar with the equipment provided.